

## Electronic keypad lock 3003

### Quick overview

#### Information:

Press each key within within 4 seconds, otherwise the current process must be restarted.

Code CORRECT: The green light flashes 2x

Code FALSE: The red light flashes 3x

Setting SUCCESSFUL: The green light flashes twice and a signal tone sounds.

Setting FAILED: The red light flashes 3 times.

Lock already occupied/ reassign:

In public mode: The green light flashes every 6 sec. If you enter the code for locking, the green light flashes at intervals, indicating that the lock or the locker is now released for new occupancy.

Battery level monitoring:

The red light flashes 3 times with an 'alarm' beep to inform the user that the battery is low. The battery must be replaced soon. After this message the lock can be unlocked for approx. 100 openings.

## Settings

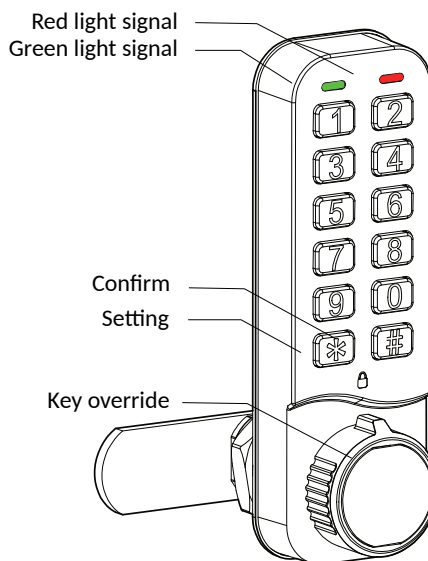
### Public mode (one-timer)

The user code is valid once, the lock maintains the open status until the next user enters the 4-digit code.

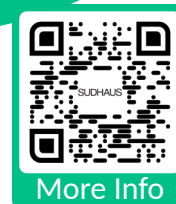
#### Information:

Factory settings:

1. Private mode
2. Codes reset
3. Auto-timing function is switched off



multi-manager  
master-key



19-10-2022



SUDHAUS GmbH  
Tel: +49 (0)2371 906-0

Teichstraße 5  
Mail: info@sudhaus.de

58644 Iserlohn  
www.sudhaus.de

## Private mode

### Information:

During opening:  
Automatic relocking after  
3 sec on each  
management level.

### User code functions

Process

Input

Open	<b>4 digit user code</b>
User Code Setting	<b>* User code # new user code #</b>

## Public mode

### Master code functions

Process

Input

Open	<b>4 digit user code</b>
	User code will be deleted
Set user code Close lock	<b>4 digit code</b>
	Automatic recovery after 3 sec.

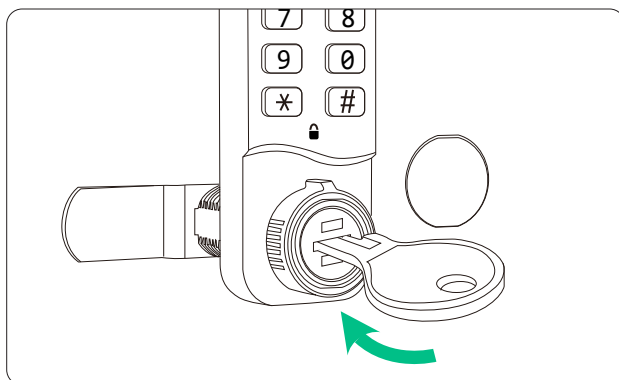
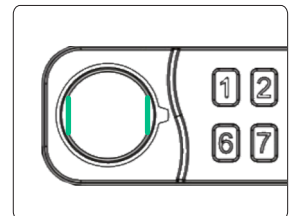
## More functions

### Penalty time

The entry of five wrong codes leads to the lock being switched off for 1 min.

### Emergency opening

Open the magnetic protective cover by carefully penetrating one of the straight sides (e.g. with a fingernail) into the gap. To prevent scratching the cover, we recommend that you do not use any metal tools for this purpose. Insert the mechanical key for emergency the lock code retains the previous setting (Fig. 1).



**Figure 1**



19-10-2022